



## Test Report

No.: GZ1105059463CHEM

Date: MAY 16, 2011

Page 1 of 5

ZHANGZHOU YINMEI PRINTING INK CO., LTD  
DONGCHE VILLAGE, HUOTIAN TOWN, YUNXIAO COUNTY, ZHANGZHOU CITY, FUJIAN PROVINCE, CHINA

This report is to supersede test report GZ1103019657/CHEM

The following sample(s) was/were submitted and identified on behalf of the applicant as 油墨

SGS Job No. : SZ13123861  
SGS Internal Reference No. : 4.3  
Client Reference Information : SEE ATTACHMENT  
Date of Sample Received : MAR 02, 2011  
Testing Period : MAR 02, 2011 TO MAR 07, 2011

Test Requested : Selected test (s) as requested by client.

Test Method : Please refer to next page(s).

Test Result(s) : Please refer to next page(s).

Signed for and on behalf of  
SGS-CSTC Ltd.

Manson Yang  
Approved Signatory

This document is issued by the Company subject to its General Conditions of Service printed overleaf, available on request or accessible at [http://www.sgs.com/terms\\_and\\_conditions.htm](http://www.sgs.com/terms_and_conditions.htm) and for electronic format documents, subject to Terms and Conditions for Electronic Documents at [www.sgs.com/terms\\_e-document.htm](http://www.sgs.com/terms_e-document.htm). Attention is drawn to the limitation of liability, jurisdiction and jurisdiction issues defined therein. Any holder of this document is advised that information contained hereon reflects the Company's findings at the time of its issue, and is valid only within the limits of Client's instructions, if any. The Company's sole responsibility is to its Client and this document does not exonerate parties to a transaction from exercising all their rights and obligations under the transaction documents. This document cannot be reproduced except in full, without prior written approval of the Company. Any unauthorized alteration, forgery or falsification of the content or appearance of this document is unlawful and offenders may be prosecuted to the fullest extent of the law. Unless otherwise stated the results shown in this test report refer only to the sample(s) tested.



198 Xuetu Road, Sciencetech Park Guangzhou Economic & Technology Development District, Guangzhou, China 510663 t (86-20) 82155555 f (86-20) 82075113 www.cn.sgs.com  
中国·广州·经济技术开发区科学城科珠路198号 邮编: 510663 t (86-20) 82155555 f (86-20) 82075113 e sgs.china@sgs.com

Member of the SGS Group (SGS SA)

**Test Results:**

Description for specimen 1 : Mauve ink

**Phthalate(s)**

Test Item(s)	Unit	Test Method (Reference)	Result	MDL
Dimethyl Phthalate (DMP)	%(w/w)	EN14372: 2004, GC-MS	N.D.	0.003
Diethyl Phthalate (DEP)	%(w/w)	EN14372: 2004, GC-MS	N.D.	0.003
Dibutyl Phthalate (DBP)	%(w/w)	EN14372: 2004, GC-MS	N.D.	0.003
Benzylbutyl Phthalate (BBP)	%(w/w)	EN14372: 2004, GC-MS	N.D.	0.003
Di-(2-ethylhexyl) Phthalate (DEHP)	%(w/w)	EN14372: 2004, GC-MS	N.D.	0.003
Diisononyl Phthalate (DINP)	%(w/w)	EN14372: 2004, GC-MS	N.D.	0.01
Di-n-octyl Phthalate (DNOP)	%(w/w)	EN14372: 2004, GC-MS	N.D.	0.003
Diisodecyl Phthalate (DIDP)	%(w/w)	EN14372: 2004, GC-MS	N.D.	0.01
Diisobutyl Phthalate (DIBP)	%(w/w)	EN14372: 2004, GC-MS	N.D.	0.003
Dinonyl Phthalate (DNP)	%(w/w)	EN14372: 2004, GC-MS	N.D.	0.003
Diisooctyl Phthalate (DIOP)	%(w/w)	EN14372: 2004, GC-MS	N.D.	0.01
Dipropyl Phthalate (DPrP)	%(w/w)	EN14372: 2004, GC-MS	N.D.	0.003
Dicyclohexyl Phthalate (DCHP)	%(w/w)	EN14372: 2004, GC-MS	N.D.	0.003
Dipentyl Phthalate (DPP)	%(w/w)	EN14372: 2004, GC-MS	N.D.	0.003
Dibenzyl Phthalate (DBzP)	%(w/w)	EN14372: 2004, GC-MS	N.D.	0.003
Diphenyl Phthalate (DPhP)	%(w/w)	EN14372: 2004, GC-MS	N.D.	0.003

**Note :**

1. mg/kg = ppm, 0.1% = 1000ppm
2. N.D. = Not detected (< MDL)
3. MDL= Method Detection Limit
4. The result(s) shown is/are of the total weight of dried sample.

**For reference:**

Entry 51/52 of Regulation (EC) No 552/2009 amending Annex XVII of REACH Regulation (EC) No 1907/2006 (previously restricted under Directive 2005/84/EC):

For DBP, BBP, DEHP

(1) Shall not be used as substances or in mixtures, in concentrations greater than 0,1% by weight of the plasticised material, in toys and childcare articles.

(2) Toys and childcare articles containing these phthalates in a concentration greater than 0,1% by weight of the plasticised material shall not be placed on the market.

For DINP, DNOP, DIDP

(1) Shall not be used as substances or in mixtures, in concentrations greater than 0,1% by weight of the plasticised material, in toys and childcare articles which can be placed in the mouth by children.

(2) Such toys and childcare articles containing these phthalates in a concentration greater than 0,1% by weight of the plasticised material shall not be placed on the market.

**Remark :** Results & photo(s) of test report GZ1103019657/CHEM. refer to test report GZ1103019656/CHEM.

This document is issued by the Company subject to its General Conditions of Service printed overleaf, available on request or accessible at [http://www.sgs.com/terms\\_and\\_conditions.htm](http://www.sgs.com/terms_and_conditions.htm) and for electronic format documents, subject to Terms and Conditions for Electronic Documents at [www.sgs.com/terms\\_e-document.htm](http://www.sgs.com/terms_e-document.htm). Attention is drawn to the limitation of liability, jurisdiction and jurisdiction issues defined therein. Any holder of this document is advised that information contained hereon reflects the Company's findings at the time of its intervention only and within the limits of Client's instructions, if any. The Company's sole responsibility is to its Client and this document does not exonerate parties to a transaction from exercising all their rights and obligations under the transaction documents. This document cannot be reproduced except in full, without prior written approval of the Company. Any unauthorized alteration, forgery or falsification of the content or appearance of this document is unlawful and offenders may be prosecuted to the fullest extent of the law. Unless otherwise stated the results shown in this test report refer only to the sample(s) tested.





## Test Report

No.: GZ1105059463CHEM

Date: MAY 16, 2011

Page 3 of 5

### ATTACHMENT:

Mixture of: S001 (SB)、S002 (SBC)、S003 (SBD)、S004 (SBN)、S006 (SS)、S007 (SSN)、S008 (SA)、S010[ (SPA)、(SPAN) ]、S886 (SGT)、S011 (PA)、S019 (BL)、S009 (SL)、C001 (SLF)、S354 (SPY)、S350 (SPL)、S351 (SPLA)、S352 (SPLC)、S650 (RP)、S651 (EVA)、S888 (SG)、S444 (SPET)、S505、S560(PSC)、C003 (SCC)、S266 (SPP)、A001 (AC)、A004 (AD)、A003 (ACNP)、A002 (ACN)、A521 (PSNP)、A505 (PS)、A005 (APA)、A006 (APAC)、A007 (APANP)、A616 (TPR)、A617 (TAR)、A618 (TCR)、A619 (THR)、A101 (APE)、G007 (PV)、G003 (PVA)、G004 (PVAN)、G001 (VD)、G002 (VDN)、G008 (VT)、G350 (VPU)、G005 (VHC)、G006 (VGA)、G122[ (DPE)、(ZPE) ]、G126 (HH)、G124 (HPE)、F111 (FA)、G275 (OPP)、G430 (PETN)、G431 (PET)、G432 (PB)、A532 (PSA)、S355 (PU)、A810 (SAC)、A812 (SANC)、A811 (SAD)、S440 (SRD)、A525 (UV)、G709 (PL)、G132 (PPB)、G708 (PT)、G707 (T)、G010 (VPVN)、G123[ (ZPEVA)、(DPE (F)) ]—01100 (110)、10200 (102)、10400 (104)、20010 (200)、20300 (203)、20600 (206)、20700 (207)、20900 (209)、21000 (210)、30000 (300)、30100 (301)、30200 (302)、30300 (303)、30400 (304)、30600 (306)、30700 (307)、30800 (308)、30730 (3073)、30740 (3074)、30380 (3038)、31400 (314)、31500 (315)、40100 (401)、40200 (402)、40300 (403)、40400 (404)、40600 (406)、40700 (407)、40800 (408)、50000 (500)、50100 (501)、50200 (502)、60100 (601)、60200 (602)、70100 (701)、80100 (801)、80105、90100 (901)、90200 (902)、21310(131)、31330(133)、31340(134)、61400(140)、41480(148)、31590(159)、50300 (Conductive black)、01200 (2000)、01300 (4000)

This document is issued by the Company subject to its General Conditions of Service printed overleaf, available on request or accessible at [http://www.sgs.com/terms\\_and\\_conditions.htm](http://www.sgs.com/terms_and_conditions.htm) and for electronic format documents, subject to Terms and Conditions for Electronic Documents at [www.sgs.com/terms\\_e-document.htm](http://www.sgs.com/terms_e-document.htm). Attention is drawn to the limitation of liability, jurisdiction and jurisdiction issues defined therein. Any holder of this document is advised that information contained hereon reflects the Company's findings at the time of its issue and is valid only within the limits of Client's instructions, if any. The Company's sole responsibility is to its Client and this document does not exonerate parties to a transaction from exercising all their rights and obligations under the transaction documents. This document cannot be reproduced except in full, without prior written approval of the Company. Any unauthorized alteration, forgery or falsification of the content or appearance of this document is unlawful and offenders may be prosecuted to the fullest extent of the law. Unless otherwise stated the results shown in this test report refer only to the sample(s) tested.



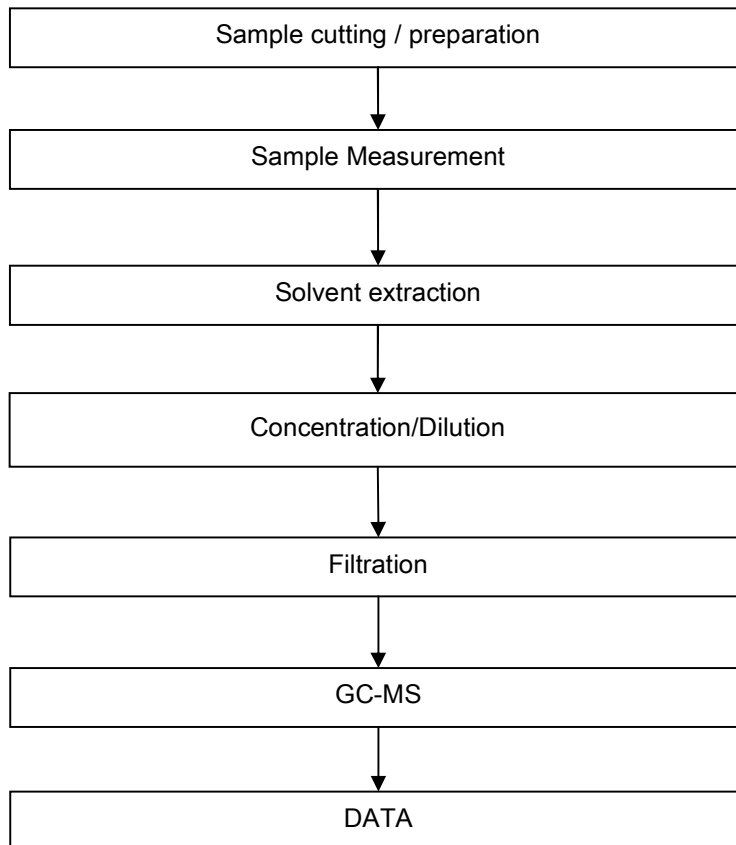
198 Xietu Road, Sciencetech Park Guangzhou Economic & Technology Development District, Guangzhou, China 510663 | (86-20) 82155555 | (86-20) 82075113 | [www.cn.sgs.com](http://www.cn.sgs.com)  
中国·广州·经济技术开发区科学城科珠路198号 邮编: 510663 | (86-20) 82155555 | (86-20) 82075113 | [sgs.china@sgs.com](mailto:sgs.china@sgs.com)

Member of the SGS Group (SGS SA)

ATTACHMENTS

Phthalates Testing Flow Chart

- 1) Name of the person who made testing: Tina Zhao
- 2) Name of the person in charge of testing: Ryan Yang

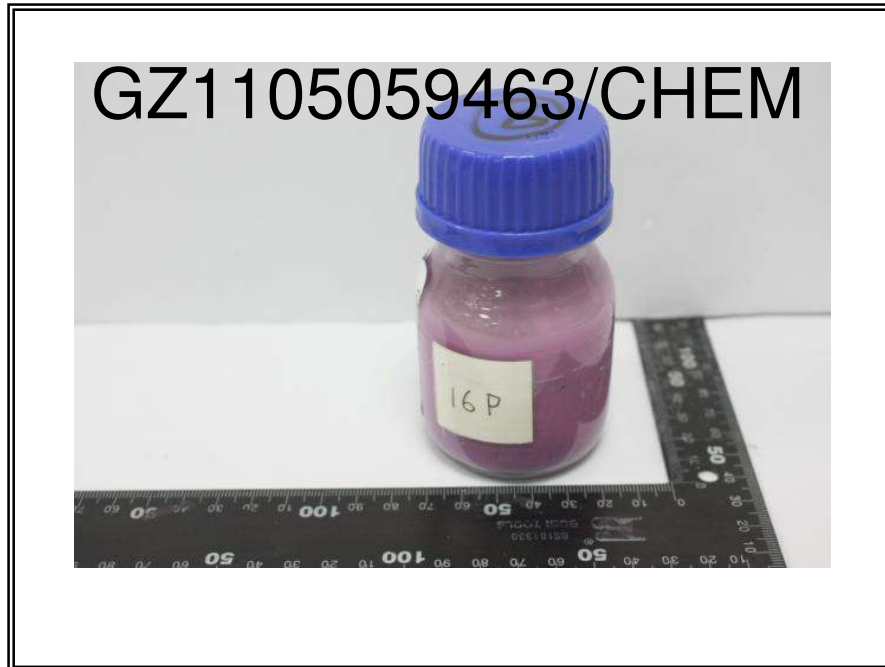


50

This document is issued by the Company subject to its General Conditions of Service printed overleaf, available on request or accessible at [http://www.sgs.com/terms\\_and\\_conditions.htm](http://www.sgs.com/terms_and_conditions.htm) and for electronic format documents, subject to Terms and Conditions for Electronic Documents at [www.sgs.com/terms\\_e-document.htm](http://www.sgs.com/terms_e-document.htm). Attention is drawn to the limitation of liability, jurisdiction and jurisdiction issues defined therein. Any holder of this document is advised that information contained hereon reflects the Company's findings at the time of its issue, and is valid only within the limits of Client's instructions, if any. The Company's sole responsibility is to its Client and this document does not exonerate parties to a transaction from exercising all their rights and obligations under the transaction documents. This document cannot be reproduced except in full, without prior written approval of the Company. Any unauthorized alteration, forgery or falsification of the content or appearance of this document is unlawful and offenders may be prosecuted to the fullest extent of the law. Unless otherwise stated the results shown in this test report refer only to the sample(s) tested.



Sample photo :



SGS authenticate the photo on original report only

\*\*\* End of Report \*\*\*

This document is issued by the Company subject to its General Conditions of Service printed overleaf, available on request or accessible at [http://www.sgs.com/terms\\_and\\_conditions.htm](http://www.sgs.com/terms_and_conditions.htm) and for electronic format documents, subject to Terms and Conditions for Electronic Documents at [www.sgs.com/terms\\_e-document.htm](http://www.sgs.com/terms_e-document.htm). Attention is drawn to the limitation of liability, jurisdiction and jurisdiction issues defined therein. Any holder of this document is advised that information contained hereon reflects the Company's findings at the time of its issue, and is valid only within the limits of Client's instructions, if any. The Company's sole responsibility is to its Client and this document does not exonerate parties to a transaction from exercising all their rights and obligations under the transaction documents. This document cannot be reproduced except in full, without prior written approval of the Company. Any unauthorized alteration, forgery or falsification of the content or appearance of this document is unlawful and offenders may be prosecuted to the fullest extent of the law. Unless otherwise stated the results shown in this test report refer only to the sample(s) tested.

