

## Test Report

No. CANEC1004347602

Date: 25 Oct 2010

Page 1 of 4

DONG GUAN IN MEI COATING CO., LTD  
TIANXIN AREA, HUANGJIANG TOWN, DONGGUAN CITY, GUANGDONG PROVINCE  
CHINA

The following sample(s) was/were submitted and identified on behalf of the clients as :  
PB-501 黑色油墨

SGS Job No. : 12784352 - SZ

SGS Internal Reference No. : 4.2

Date of Sample Received : 19 Oct 2010

Testing Period : 19 Oct 2010 - 22 Oct 2010

Test Requested : Selected test(s) as requested by client.

Test Method : Please refer to next page(s).

Test Results : Please refer to next page(s).

Conclusion : Based on the performed tests on submitted sample(s), the results **comply with** the RoHS Directive 2002/95/EC and its subsequent amendments.

Signed for and on behalf of  
SGS-CSTC Ltd.



Almay Gao  
Approved Signatory

This document is issued by the Company subject to its General Conditions of Service printed overleaf, available on request or accessible at [http://www.sgs.com/terms\\_and\\_conditions.htm](http://www.sgs.com/terms_and_conditions.htm) and, for electronic format documents, subject to Terms and Conditions for Electronic Documents at [www.sgs.com/terms\\_e-document.htm](http://www.sgs.com/terms_e-document.htm). Attention is drawn to the limitation of liability, indemnification and jurisdiction issues defined therein. Any holder of this document is advised that information contained hereon reflects the Company's findings at the time of its preparation only and within the limits of Client's instructions, if any. The Company's sole responsibility is to its Client and this document does not exonerate parties to a transaction from exercising all their rights and obligations under the transaction documents. This document cannot be reproduced except in full, without prior written approval of the Company. Any unauthorized alteration, forgery or falsification of the content or appearance of this document is unlawful and offenders may be prosecuted to the fullest extent of the law. Unless otherwise stated, the results shown in this test report refer only to the sample(s) tested.

# Test Report

No. CANEC1004347602

Date: 25 Oct 2010

Page 2 of 4

## Test Results:

ID for specimen 1 : CAN10-043476.002  
 Description for specimen 1 : Black ink

## RoHS Directive 2002/95/EC

| Test Item(s)                                      | Unit  | Test Method (Reference) | Result | MDL | Limit |
|---|-------|-------------------------|--------|-----|-------|
| Cadmium (Cd)                                      | mg/kg | IEC 62321:2008, ICP-OES | N.D.   | 2   | 100   |
| Lead (Pb)   | mg/kg | IEC 62321:2008, ICP-OES | N.D.   | 2   | 1000  |
| Mercury (Hg)                                      | mg/kg | IEC 62321:2008, ICP-OES | N.D.   | 2   | 1000  |
| Hexavalent Chromium (CrVI) by alkaline extraction | mg/kg | IEC 62321:2008, UV-Vis  | N.D.   | 2   | 1000  |
| Sum of PBBs                                       | mg/kg | -                       | N.D.   | -   | 1000  |
| Monobromobiphenyl                                 | mg/kg | IEC 62321:2008, GC-MS   | N.D.   | 5   |       |
| Dibromobiphenyl                                   | mg/kg | IEC 62321:2008, GC-MS   | N.D.   | 5   |       |
| Tribromobiphenyl                                  | mg/kg | IEC 62321:2008, GC-MS   | N.D.   | 5   |       |
| Tetrabromobiphenyl                                | mg/kg | IEC 62321:2008, GC-MS   | N.D.   | 5   |       |
| Pentabromobiphenyl                                | mg/kg | IEC 62321:2008, GC-MS   | N.D.   | 5   |       |
| Hexabromobiphenyl                                 | mg/kg | IEC 62321:2008, GC-MS   | N.D.   | 5   |       |
| Heptabromobiphenyl                                | mg/kg | IEC 62321:2008, GC-MS   | N.D.   | 5   |       |
| Octabromobiphenyl                                 | mg/kg | IEC 62321:2008, GC-MS   | N.D.   | 5   |       |
| Nonabromobiphenyl                                 | mg/kg | IEC 62321:2008, GC-MS   | N.D.   | 5   |       |
| Decabromobiphenyl                                 | mg/kg | IEC 62321:2008, GC-MS   | N.D.   | 5   |       |
| Sum of PBDEs                                      | mg/kg | -                       | N.D.   | -   | 1000  |
| Monobromodiphenyl ether                           | mg/kg | IEC 62321:2008, GC-MS   | N.D.   | 5   |       |
| Dibromodiphenyl ether                             | mg/kg | IEC 62321:2008, GC-MS   | N.D.   | 5   |       |
| Tribromodiphenyl ether                            | mg/kg | IEC 62321:2008, GC-MS   | N.D.   | 5   |       |
| Tetrabromodiphenyl ether                          | mg/kg | IEC 62321:2008, GC-MS   | N.D.   | 5   |       |
| Pentabromodiphenyl ether                          | mg/kg | IEC 62321:2008, GC-MS   | N.D.   | 5   |       |
| Hexabromodiphenyl ether                           | mg/kg | IEC 62321:2008, GC-MS   | N.D.   | 5   |       |
| Heptabromodiphenyl ether                          | mg/kg | IEC 62321:2008, GC-MS   | N.D.   | 5   |       |
| Octabromodiphenyl ether                           | mg/kg | IEC 62321:2008, GC-MS   | N.D.   | 5   |       |
| Nonabromodiphenyl ether                           | mg/kg | IEC 62321:2008, GC-MS   | N.D.   | 5   |       |
| Decabromodiphenyl ether                           | mg/kg | IEC 62321:2008, GC-MS   | N.D.   | 5   |       |

## Note:

1. mg/kg = ppm
2. N.D. = Not Detected (< MDL)
3. MDL = Method Detection Limit
4. "-" = Not regulated

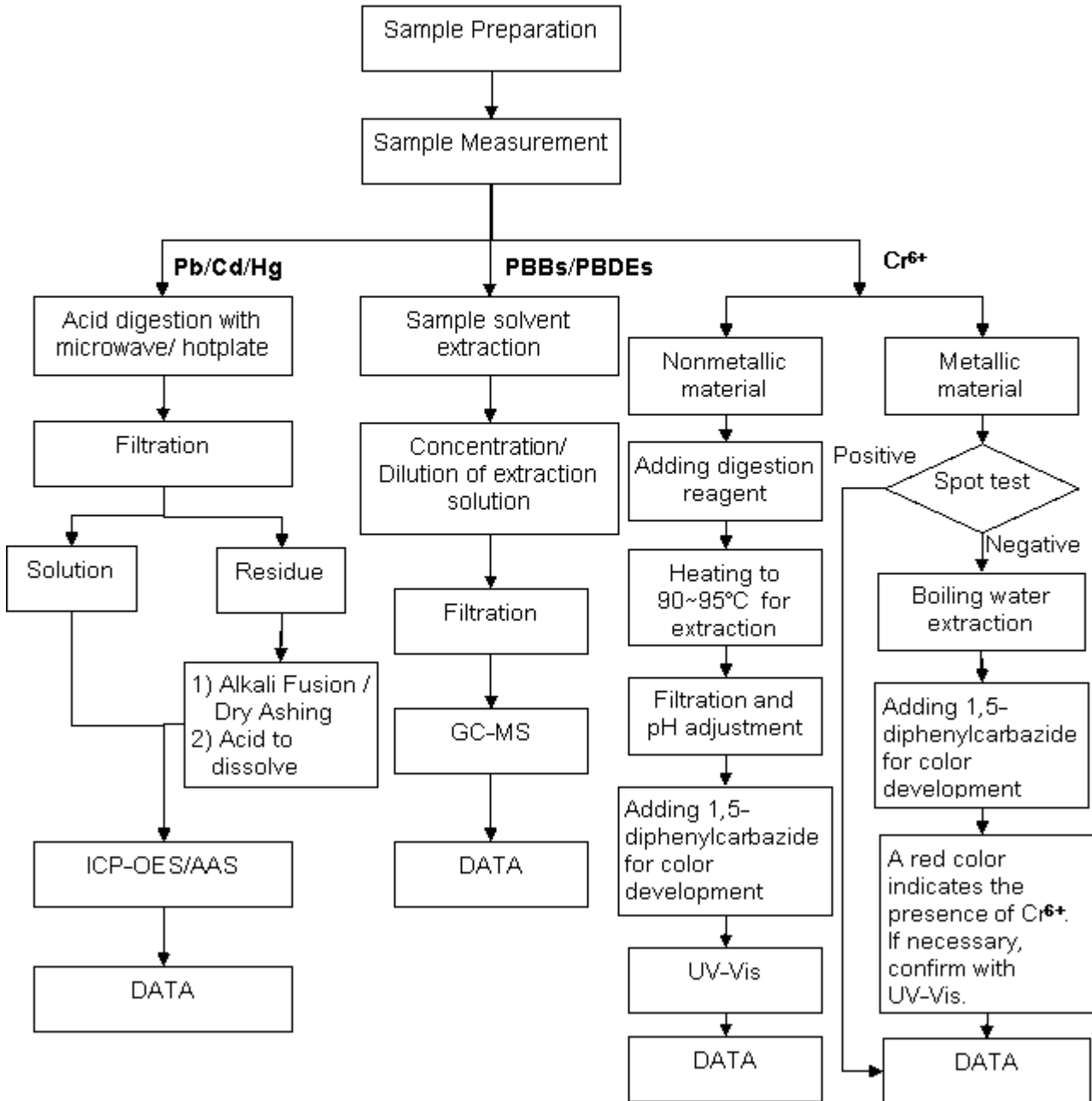
Remark : The result(s) shown is/are of the total weight of dried sample.

This document is issued by the Company subject to its General Conditions of Service printed overleaf, available on request or accessible at [http://www.sgs.com/terms\\_and\\_conditions.htm](http://www.sgs.com/terms_and_conditions.htm) and, for electronic format documents, subject to Terms and Conditions for Electronic Documents at [www.sgs.com/terms\\_e-document.htm](http://www.sgs.com/terms_e-document.htm). Attention is drawn to the limitation of liability, indemnification and jurisdiction issues defined therein. Any holder of this document is advised that information contained hereon reflects the Company's findings at the time of its preparation only and within the limits of Client's instructions, if any. The Company's sole responsibility is to its Client and this document does not exonerate parties to a transaction from exercising all their rights and obligations under the transaction documents. This document cannot be reproduced except in full, without prior written approval of the Company. Any unauthorized alteration, forgery or falsification of the content or appearance of this document is unlawful and offenders may be prosecuted to the fullest extent of the law. Unless otherwise stated, the results shown in this test report refer only to the sample(s) tested.

ATTACHMENTS

**RoHS Testing Flow Chart**

- 1) Name of the person who made testing: Bella Wang / Cutey Yu / Ross Zhan
- 2) Name of the person in charge of testing: Adams Yu / Ryan Yang
- 3) These samples were dissolved totally by pre-conditioning method according to below flow chart (Cr6+ and PBBs/PBDEs test method excluded).



This document is issued by the Company subject to its General Conditions of Service printed overleaf, available on request or accessible at [http://www.sgs.com/terms\\_and\\_conditions.htm](http://www.sgs.com/terms_and_conditions.htm) and, for electronic format documents, subject to Terms and Conditions for Electronic Documents at [www.sgs.com/terms\\_e-document.htm](http://www.sgs.com/terms_e-document.htm). Attention is drawn to the limitation of liability, indemnification and jurisdiction issues defined therein. Any holder of this document is advised that information contained hereon reflects the Company's findings at the time of its preparation only and within the limits of Client's instructions, if any. The Company's sole responsibility is to its Client and this document does not exonerate parties to a transaction from exercising all their rights and obligations under the transaction documents. This document cannot be reproduced except in full, without prior written approval of the Company. Any unauthorized alteration, forgery or falsification of the content or appearance of this document is unlawful and offenders may be prosecuted to the fullest extent of the law. Unless otherwise stated, the results shown in this test report refer only to the sample(s) tested.

Sample photo:



SGS authenticate the photo on original report only  
\*\*\* End of Report \*\*\*

This document is issued by the Company subject to its General Conditions of Service printed overleaf, available on request or accessible at [http://www.sgs.com/terms\\_and\\_conditions.htm](http://www.sgs.com/terms_and_conditions.htm) and, for electronic format documents, subject to Terms and Conditions for Electronic Documents at [www.sgs.com/terms\\_e-document.htm](http://www.sgs.com/terms_e-document.htm). Attention is drawn to the limitation of liability, indemnification and jurisdiction issues defined therein. Any holder of this document is advised that information contained hereon reflects the Company's findings at the time of its preparation only, and within the limits of Client's instructions, if any. The Company's sole responsibility is to its Client and this document does not exonerate parties to a transaction from exercising all their rights and obligations under the transaction documents. This document cannot be reproduced except in full, without prior written approval of the Company. Any unauthorized alteration, forgery or falsification of the content or appearance of this document is unlawful and offenders may be prosecuted to the fullest extent of the law. Unless otherwise stated, the results shown in this test report refer only to the sample(s) tested.