



Test Report

No.: GZ1105057111/CHEM

Date: MAY 11, 2011

Page 1 of 5

DONGGUAN IN MEI COATING CO., LTD
TIANXIN AREA, HUANGJIANG TOWN, DONGGUAN CITY, GUANGDONG PROVINCE

This report is to supersede test report GZ1103019656/CHEM

The following sample(s) was/were submitted and identified on behalf of the applicant as 油墨

SGS Job No. : SZ13113530
SGS Internal Reference No. : 4.3
Client Reference Information : SEE ATTACHMENT
Date of Sample Received : MAR 02, 2011
Testing Period : MAR 02, 2011 TO MAR 07, 2011

Test Requested : Selected test (s) as requested by client.

Test Method : Please refer to next page(s).

Test Result(s) : Please refer to next page(s).

Signed for and on behalf of
SGS-CSTC Ltd.

Manson Yang
Approved Signatory

This document is issued by the Company subject to its General Conditions of Service printed hereon, available on request or accessible at http://www.sgs.com/terms_and_conditions.htm and for electronic format documents subject to Terms and Conditions for Electronic Documents at www.sgs.com/terms_e-document.htm. Attention is drawn to the limitation of liability, jurisdiction and jurisdiction issues defined therein. Any holder of this document is advised that information contained hereon reflects the Company's findings at the time of its inspection only and within the limits of Client's instructions, if any. The Company's sole responsibility is to its Client and this document does not exonerate parties to a transaction from ascertaining all their rights and obligations under the transaction documents. This document cannot be reproduced except in full, without prior written approval of the Company. Any unauthorized alteration, forgery or falsification of the content or appearance of this document is unlawful and offenders may be prosecuted to the fullest extent of the law. Unless otherwise stated the results shown in this test report refer only to the sample(s) tested.



188 Xinhua Road, Science Park Guangzhou Export & Technology Development District, Guangzhou, China 510663 | (86-20) 82155555 | (86-20) 82075113 | www.cn.sgs.com
中国·广州·经济技术开发区科学城科珠路188号 邮编: 510663 | (86-20) 82155555 | (86-20) 82075113 | sgs.china@sgs.com

Member of the SGS Group (SGS SA)

Test Results:

Description for specimen 1 : Mauve ink

Phthalate(s)

Test Item(s)	Unit	Test Method (Reference)	Result	MDL
Dimethyl Phthalate (DMP)	%(w/w)	EN14372: 2004, GC-MS	N.D.	0.003
Diethyl Phthalate (DEP)	%(w/w)	EN14372: 2004, GC-MS	N.D.	0.003
Dibutyl Phthalate (DBP)	%(w/w)	EN14372: 2004, GC-MS	N.D.	0.003
Benzylbutyl Phthalate (BBP)	%(w/w)	EN14372: 2004, GC-MS	N.D.	0.003
Di-(2-ethylhexyl) Phthalate (DEHP)	%(w/w)	EN14372: 2004, GC-MS	N.D.	0.003
Diisononyl Phthalate (DINP)	%(w/w)	EN14372: 2004, GC-MS	N.D.	0.01
Di-n-octyl Phthalate (DNOP)	%(w/w)	EN14372: 2004, GC-MS	N.D.	0.003
Diisodecyl Phthalate (DIDP)	%(w/w)	EN14372: 2004, GC-MS	N.D.	0.01
Diisobutyl Phthalate (DIBP)	%(w/w)	EN14372: 2004, GC-MS	N.D.	0.003
Dinonyl Phthalate (DNP)	%(w/w)	EN14372: 2004, GC-MS	N.D.	0.003
Diisooctyl Phthalate (DIOP)	%(w/w)	EN14372: 2004, GC-MS	N.D.	0.01
Dipropyl Phthalate (DPrP)	%(w/w)	EN14372: 2004, GC-MS	N.D.	0.003
Dicyclohexyl Phthalate (DCHP)	%(w/w)	EN14372: 2004, GC-MS	N.D.	0.003
Dipentyl Phthalate (DPP)	%(w/w)	EN14372: 2004, GC-MS	N.D.	0.003
Dibenzyl Phthalate (DBzP)	%(w/w)	EN14372: 2004, GC-MS	N.D.	0.003
Diphenyl Phthalate (DPhP)	%(w/w)	EN14372: 2004, GC-MS	N.D.	0.003

Note :

1. mg/kg = ppm, 0.1% = 1000ppm
2. N.D. = Not detected (< MDL)
3. MDL= Method Detection Limit
4. The result(s) shown is/are of the total weight of dried sample.

For reference:

Entry 51/52 of Regulation (EC) No 552/2009 amending Annex XVII of REACH Regulation (EC) No 1907/2006 (previously restricted under Directive 2005/84/EC):

For DBP, BBP, DEHP

(1) Shall not be used as substances or in mixtures, in concentrations greater than 0,1% by weight of the plasticised material, in toys and childcare articles.

(2) Toys and childcare articles containing these phthalates in a concentration greater than 0,1% by weight of the plasticised material shall not be placed on the market.

For DINP, DNOP, DIDP

(1) Shall not be used as substances or in mixtures, in concentrations greater than 0,1% by weight of the plasticised material, in toys and childcare articles which can be placed in the mouth by children.

(2) Such toys and childcare articles containing these phthalates in a concentration greater than 0,1% by weight of the plasticised material shall not be placed on the market.

This document is issued by the Company subject to its General Conditions of Service printed hereon, available on request or accessible at http://www.sgs.com/terms_and_conditions.htm and for electronic format documents subject to Terms and Conditions for Electronic Documents at www.sgs.com/terms_e-document.htm. Attention is drawn to the limitation of liability, jurisdiction and jurisdiction issues defined therein. Any holder of this document is advised that information contained hereon reflects the Company's findings at the time of its issue, and is only valid within the limits of Client's instructions, if any. The Company's sole responsibility is to its Client and this document does not exonerate parties to a transaction from ascertaining all their rights and obligations under the transaction documents. This document cannot be reproduced except in full, without prior written approval of the Company. Any unauthorized alteration, forgery or falsification of the content or appearance of this document is unlawful and offenders may be prosecuted to the fullest extent of the law. Unless otherwise stated the results shown in this test report refer only to the sample(s) tested.



ATTACHMENT:

Mixture of: S001 (SB) 、 S002 (SBC) 、 S003 (SBD) 、 S004 (SBN) 、 S006 (SS) 、 S007 (SSN) 、 S008 (SA) 、 S010[(SPA) 、 (SPAN)]、 S886 (SGT) 、 S011 (PA) 、 S019 (BL) 、 S009 (SL) 、 C001 (SLF) 、 S354 (SPY) 、 S350 (SPL) 、 S351 (SPLA) 、 S352 (SPLC) 、 S650 (RP) 、 S651 (EVA) 、 S888 (SG) 、 S444 (SPET) 、 S505、 S560(PSC)、 C003 (SCC) 、 S266 (SPP) 、 A001 (AC) 、 A004 (AD) 、 A003 (ACNP) 、 A002 (ACN) 、 A521 (PSNP) 、 A505 (PS) 、 A005 (APA) 、 A006 (APAC) 、 A007 (APANP) 、 A616 (TPR) 、 A617 (TAR) 、 A618 (TCR) 、 A619 (THR) 、 A101 (APE) 、 G007 (PV) 、 G003 (PVA) 、 G004 (PVAN) 、 G001 (VD) 、 G002 (VDN) 、 G008 (VT) 、 G350 (VPU) 、 G005 (VHC) 、 G006 (VGA) 、 G122[(DPE) 、 (ZPE)]、 G126 (HH) 、 G124 (HPE) 、 F111 (FA) 、 G275 (OPP) 、 G430 (PETN) 、 G431 (PET) 、 G432 (PB) 、 A532 (PSA) 、 S355 (PU) 、 A810 (SAC) 、 A812 (SANC) 、 A811 (SAD) 、 S440 (SRD) 、 A525 (UV) 、 G709 (PL) 、 G132 (PPB) 、 G708 (PT) 、 G707 (T) 、 G010 (VPVN) 、 G123[(ZPEVA) 、 DPE (F)]—01100 (110) 、 10200 (102) 、 10400 (104) 、 20010 (200) 、 20300 (203) 、 20600 (206) 、 20700 (207) 、 20900 (209) 、 21000 (210) 、 30000 (300) 、 30100 (301) 、 30200 (302) 、 30300 (303) 、 30400 (304) 、 30600 (306) 、 30700 (307) 、 30800 (308) 、 30730 (3073) 、 30740 (3074) 、 30380 (3038) 、 31400 (314) 、 31500 (315) 、 40100 (401) 、 40200 (402) 、 40300 (403) 、 40400 (404) 、 40600 (406) 、 40700 (407) 、 40800 (408) 、 50000 (500) 、 50100 (501) 、 50200 (502) 、 60100 (601) 、 60200 (602) 、 70100 (701) 、 80100 (801) 、 80105、 90100 (901) 、 90200 (902) 、 21310(131)、 31330(133)、 31340(134)、 61400(140)、 41480(148)、 31590(159)、 50300 (导电黑) 、 01200 (2000) 、 01300 (4000)

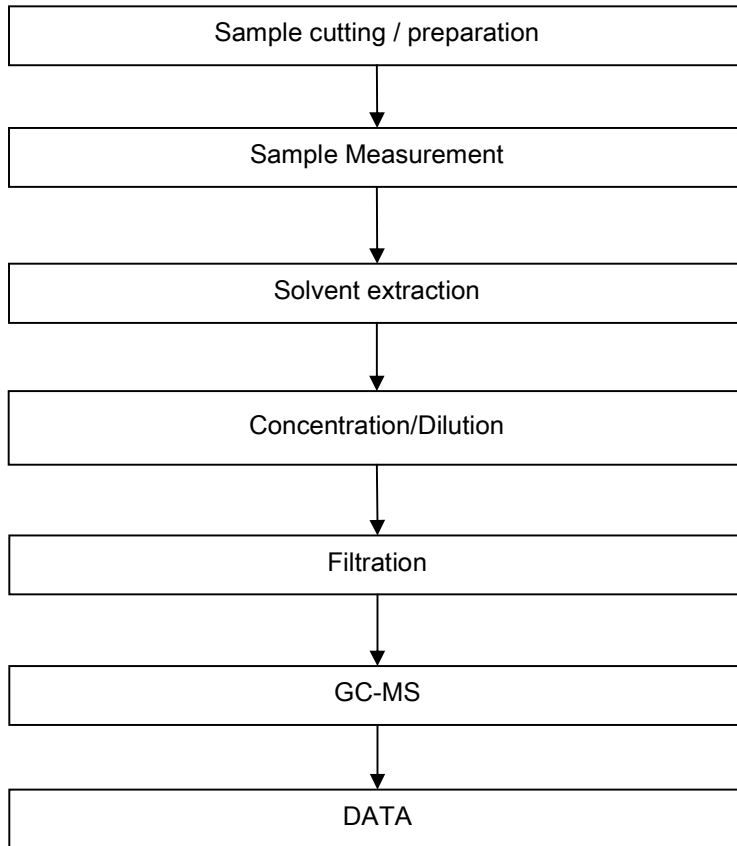
This document is issued by the Company subject to its General Conditions of Service printed hereon, available on request or accessible at http://www.sgs.com/terms_and_conditions.htm and for electronic format documents subject to Terms and Conditions for Electronic Documents at www.sgs.com/terms_e-document.htm. Attention is drawn to the limitation of liability, jurisdiction and jurisdiction issues defined therein. Any holder of this document is advised that information contained hereon reflects the Company's findings at the time of its production only and within the limits of Client's instructions, if any. The Company's sole responsibility is to its Client and this document does not exonerate parties to a transaction from ascertaining all their rights and obligations under the transaction documents. This document cannot be reproduced except in full, without prior written approval of the Company. Any unauthorized alteration, forgery or falsification of the content or appearance of this document is unlawful and offenders may be prosecuted to the fullest extent of the law. Unless otherwise stated the results shown in this test report refer only to the sample(s) tested.



ATTACHMENTS

Phthalates Testing Flow Chart

- 1) Name of the person who made testing: Tina Zhao
- 2) Name of the person in charge of testing: Ryan Yang



This document is issued by the Company subject to its General Conditions of Service printed hereafter, available on request or accessible at http://www.sgs.com/terms_and_conditions.htm and for electronic format documents subject to Terms and Conditions for Electronic Documents at www.sgs.com/terms_e-document.htm. Attention is drawn to the limitation of liability, jurisdiction and jurisdiction issues defined therein. Any holder of this document is advised that information contained herein reflects the Company's findings at the time of its production only and within the limits of Client's instructions, if any. The Company's sole responsibility is to its Client and this document does not exonerate parties to a transaction from ascertaining all their rights and obligations under the transaction documents. This document cannot be reproduced except in full, without prior written approval of the Company. Any unauthorized alteration, forgery or falsification of the content or appearance of this document is unlawful and offenders may be prosecuted to the fullest extent of the law. Unless otherwise stated the results shown in this test report refer only to the sample(s) tested.



Sample photo :



SGS authenticate the photo on original report only

*** End of Report ***

This document is issued by the Company subject to its General Conditions of Service printed hereon, available on request or accessible at http://www.sgs.com/terms_and_conditions.htm and for electronic format documents subject to Terms and Conditions for Electronic Documents at www.sgs.com/terms_e-document.htm. Attention is drawn to the limitation of liability, jurisdiction and jurisdiction issues defined therein. Any holder of this document is advised that information contained hereon reflects the Company's findings at the time of its testing only and within the limits of Client's instructions, if any. The Company's sole responsibility is to its Client and this document does not exonerate parties to a transaction from ascertaining all their rights and obligations under the transaction documents. This document cannot be reproduced except in full, without prior written approval of the Company. Any unauthorized alteration, forgery or falsification of the content or appearance of this document is unlawful and offenders may be prosecuted to the fullest extent of the law. Unless otherwise stated the results shown in this test report refer only to the sample(s) tested.

